

**FOR LEASE**

# The Park Community Mall

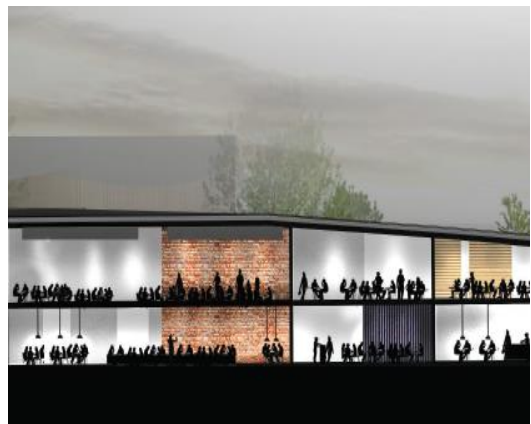
NATIONAL ROAD NO. 1, KHAN CHBAR AMPOV, PHNOM PENH

**RETAIL**



## Details

Property Type	Community Mall
Location	National Road No. 1, Sangkat Nirouth, Khan Chbar Ampov, Phnom Penh
Driving time to CBD	20 minutes
Land Area	Approximately 100,000 sq.m.
Net Leasable Area	Approximately 4,662 sq.m.
Unit size	72 sq.m. – 218 sq.m.
Handover Date	Immediately
Type of Tenants	Café, F&B, Convenience Store & Pharmacy
Unit Type	Single Storey and Two-Storey Space
A/C Specification	Air Conditioning System by Tenant
Ceiling Height	3 m - 3.4 m
Parking Space	Ample cars and motorbikes parking
Rental	Please contact CBRE Cambodia's Agent
Exclusive Marketing Agent:	CBRE Cambodia
Developer	The Park Community Co., Ltd.



## CONTACT US

### Thyda Pov

Leasing Manager  
+855 12 537 780  
thyda.pov@cbre.com

### Sivmey Prak

Leasing Executive  
+855 95 555 781  
sivmey.prak@cbre.com



[www.cbre.com.kh](http://www.cbre.com.kh)

**CBRE** | Cambodia

Part of the CBRE affiliate network

FOR LEASE

# The Park Community Mall

NATIONAL ROAD NO. 1, KHAN CHBAR AMPOV, PHNOM PENH

RETAIL



## LOCATION



## CONTACT US

**Thyda Pov**

Leasing Manager  
+855 12 537 780  
thyda.pov@cbre.com

**Sivmey Prak**

Leasing Executive  
+855 95 555 781  
sivmey.prak@cbre.com



© 2018 CBRE, Inc. This information has been obtained from sources believed reliable. We have not verified it and make no guarantee, warranty or representation about it. Any projections, opinions, assumptions or estimates used are for example only and do not represent the current or future performance of the property. You and your advisors should conduct a careful, independent investigation of the property to determine to your satisfaction the suitability of the property for your needs. Photos herein are the property of their respective owners and use of these images without the express written consent of the owner is prohibited. CBRE and the CBRE logo are service marks of CBRE, Inc. and/or its affiliated or related companies in the United States and other countries. All other marks displayed on this document are the property of their respective owners.

[www.cbre.com.kh](http://www.cbre.com.kh)

**CBRE** Cambodia

Part of the CBRE affiliate network