

[www.cbre.com.kh](http://www.cbre.com.kh)

NOW AVAILABLE

Address:

Along street Hanoi, Bonla Saet Village, Khmounh Commune, Khan Rusey Keo, Phnom Penh, Cambodia.

# LAND FOR SALE



FOR MORE INFORMATION CONTACT

**Malay Nop**

Residential- Land Leasing & Sales

(855) 23 964 099 Ext 103

(855) 89 683 303

[malay.nop@cbre.com](mailto:malay.nop@cbre.com)

**CBRE** | Cambodia

Part of the CBRE affiliate network

# Land For Sale

Address:

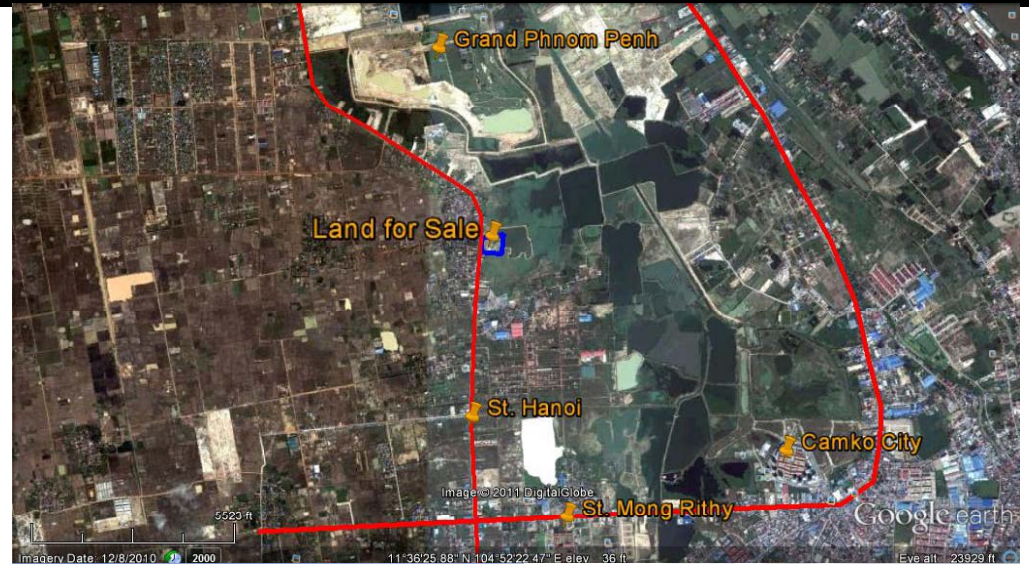
Along Street Hanoi, Bonla Saet Village, Khmounh Commune, Khan Rusey Keo, Phnom Penh, Cambodia.

- ❑ Land Size: 8,832 sm
- ❑ Price: \$ 210/sm

For additional information, please visit the website:  
[www.cbre.com.kh](http://www.cbre.com.kh)

## Malay Nop

Residential- Land leasing & Sales  
(855) 023 964 099 Ext 103  
(855) 89 683 303  
[malay.nop@cbre.com](mailto:malay.nop@cbre.com)



FOR MORE  
INFORMATION  
PLEASE  
CONTACT

CB Richard Ellis | 2800 Post Oak Blvd. | Suite 2300 | Houston, TX 77056 | [www.cbre.com/houstongalleria](http://www.cbre.com/houstongalleria)

© 2010 CB Richard Ellis, Inc. This information has been obtained from sources believed reliable. We have not verified it and make no guarantee, warranty or representation about it. Any projections, opinions, assumptions or estimates used are for example only and do not represent the current or future performance of the property. You and your advisors should conduct a careful, independent investigation of the property to determine to your satisfaction the suitability of the property for your needs.

**CBRE** Cambodia

Part of the CBRE affiliate network